

Machine investments

Let's work together to
pay off your machine
investment faster



SANDVIK
coromant

A new **machine** is a major investment involving tight schedules and high expectations. If you are in the process of buying a new machine, we can show you how to maximize the return on your investment. With the right approach from the start, we can help you cut payback time by up to an entire year.

At Sandvik Coromant, we know that collaboration is the foundation for successful manufacturing. We help you define your current needs as well as identify new opportunities that your machine investment can bring.

We work in close cooperation and true partnership with machine tool makers,

machine tool dealers and customers in a wide range of industries. With research and testing facilities worldwide and a global network of experts, we are ready to support you wherever and whenever you need us.

The right start is more than a good idea, it's good business.



We're here for you, from start to part

Realize the full potential of your investment, right from the start. Sandvik Coromant services can include:

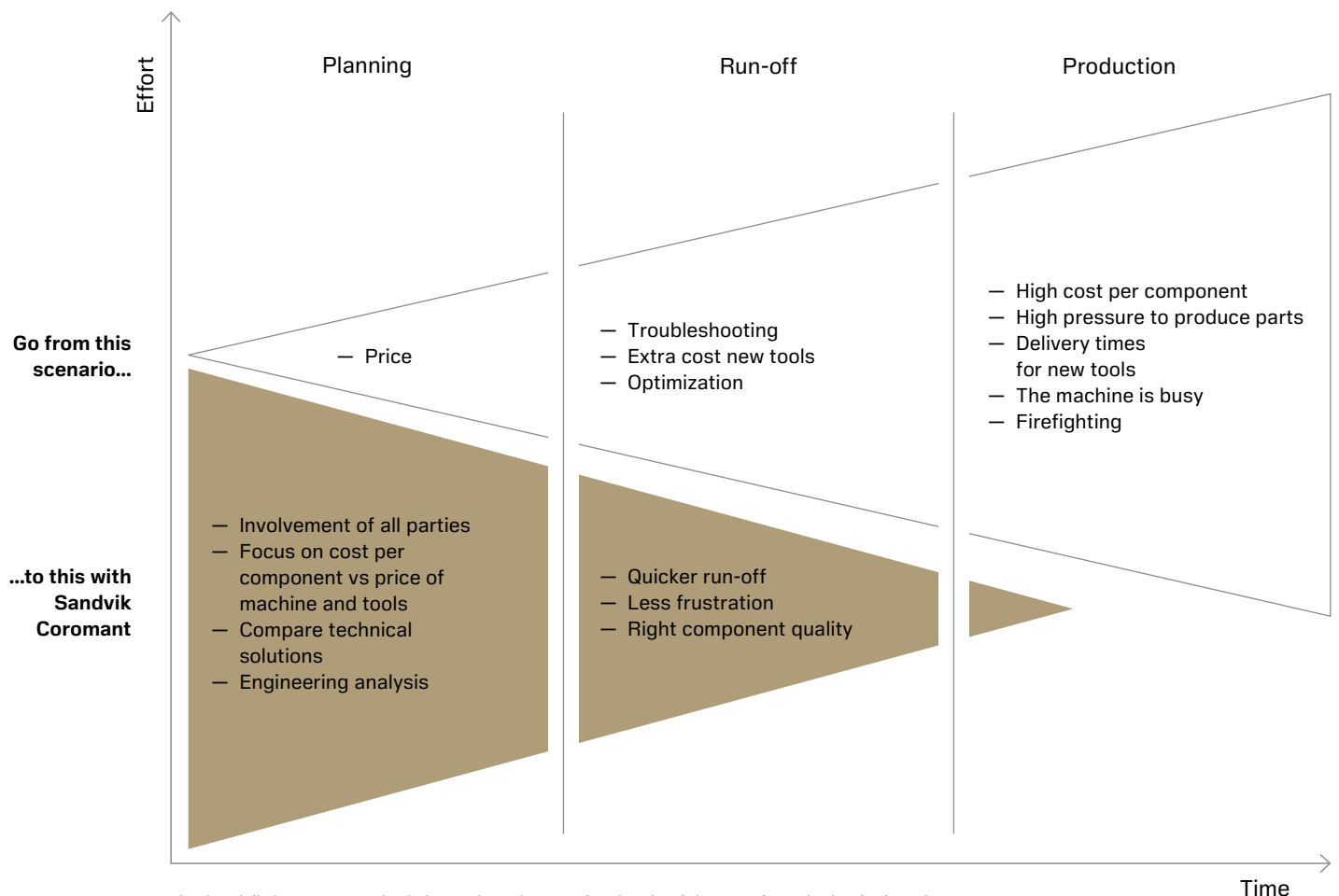
- Evaluating parts, processes and applications
- Assisting with time and cost per component studies
- Customizing a tooling package that matches your machining requirements
- Providing onsite application support
- Customizing a training programme for your operators using your new machine and tooling

By reducing payback time, you reduce the time it takes for your new machine to start making your business more profitable.

Rethink your machine buying process

In a common scenario, installation and production are preceded by planning, investment and run-off. The model below shows that spending more time on upfront planning can lead to a smoother run-off and minimum production disruptions.

- Work with your machine tool builder and cutting tool company to evaluate current parts, processes and applications, taking into consideration components you may add in the future.
- Develop cost-per-component studies to guide machine decisions based on long-term value (rather than initial equipment cost) and create targeted tooling packages to match your individual machining requirements.
- Consider tooling, accessories and machine programming at the time of machine purchase to help save money and time in the long term through a lower cost per component and less trial and error.



The Sandvik Coromant method shows that when you involve the right team from the beginning of the process, you will have a more efficient and profitable operation once the machine is installed.

Benefits of strategic investment

With the right from the start approach towards machine investment, you can buy a machine that truly suits your current and future production demands. Moreover, you can substantially reduce the production cost and get a faster return on your machine investment.

By engaging with a trusted partner and by evaluating your investment options right from the start, you will achieve considerable benefits.



Faster payback

Typical machine investments call for a three to five year payback. With Sandvik Coromant tooling, expertise and service, you can expect to take up to a full 12 months off that schedule while lowering cost of debt and increasing the rate of return for your business.



Faster throughput

Our tools and services maximize your new machine's capabilities, helping to optimize metal removal rates. Get more parts per hour, right from the start.



Optimum efficiency

Our industry-leading innovations and patented technologies help your machines operate at peak performance. Select your tooling at the same time as you specify your new machine, to run efficiently right from the start.



Reduced downtime

With a standardized tooling system customized to your day-to-day needs, you waste less time on changeovers, keeping machine utilization to an absolute maximum.

Tips for successful planning

Calculate long-term cost savings potential in addition to upfront price

Look beyond the price of the initial investment to consider the impact of your choices on the ongoing cost of production.

Higher-quality or technically advanced cutting tools that last longer and increase productivity could be worth a one-time higher price if tooling replacement time and costs decrease.

Explore your machine configuration options

Are you looking for an Internet of Things (IoT) enabled machine? Do you need full five-axis capabilities? Three-axis vertical machining? Or something in-between, such as universal turning with driven tooling?

Multifunctional machines are sometimes more beneficial since they can increase machine utilization and enable productive tooling options.

Consider other available technologies

When a machine can start producing parts from the first day, investment payback time will be shorter.

Connected tooling for advanced manufacturing, all-directional turning, Y-axis parting, precision coolant, quick-change tooling and component fixturing are a few examples of technologies that you may want to consider.

Select tools and accessories compatible with the machine

Multifunctional machines, for example, require particularly strong tooling and couplings because the machines use the same spindle for rotating and static applications.

Be aware of the programming techniques and tools you'll need to optimize multifunctional and multi-axis machine operations, should you decide to purchase that type of machine.

Enhance your manufacturing with digital solutions

Machining calculators and apps

Let our digital solutions guide you all the way along the manufacturing process. We offer you digital support in your machining preparations, when planning new investments as well as to find the tools you are looking for.

Calculated success on your investment

With the payback calculator, you can easily make an investment and component analysis and calculate your savings. Find out what the most important considerations are for maximizing your return on investment.

Create tool assemblies online

Using a digital tool library replaces the need for browsing through paper catalogues to find the required cutting tool information. With CoroPlus® Tool Library, you can apply attributes such as tool type and sizes, while the results are pre-filtered to create valid combinations of tool bodies, inserts and other tool items.





Connected solutions for digital machining

Digital machining is set to transform the future of manufacturing, the biggest benefits being a significant increase in optimization of processes and better, more fact-based decision making.

Our digital machining offer includes advanced software and tools that support your digital manufacturing, all the way from design and planning to machining and machining analysis.

Read more about digital machining solutions

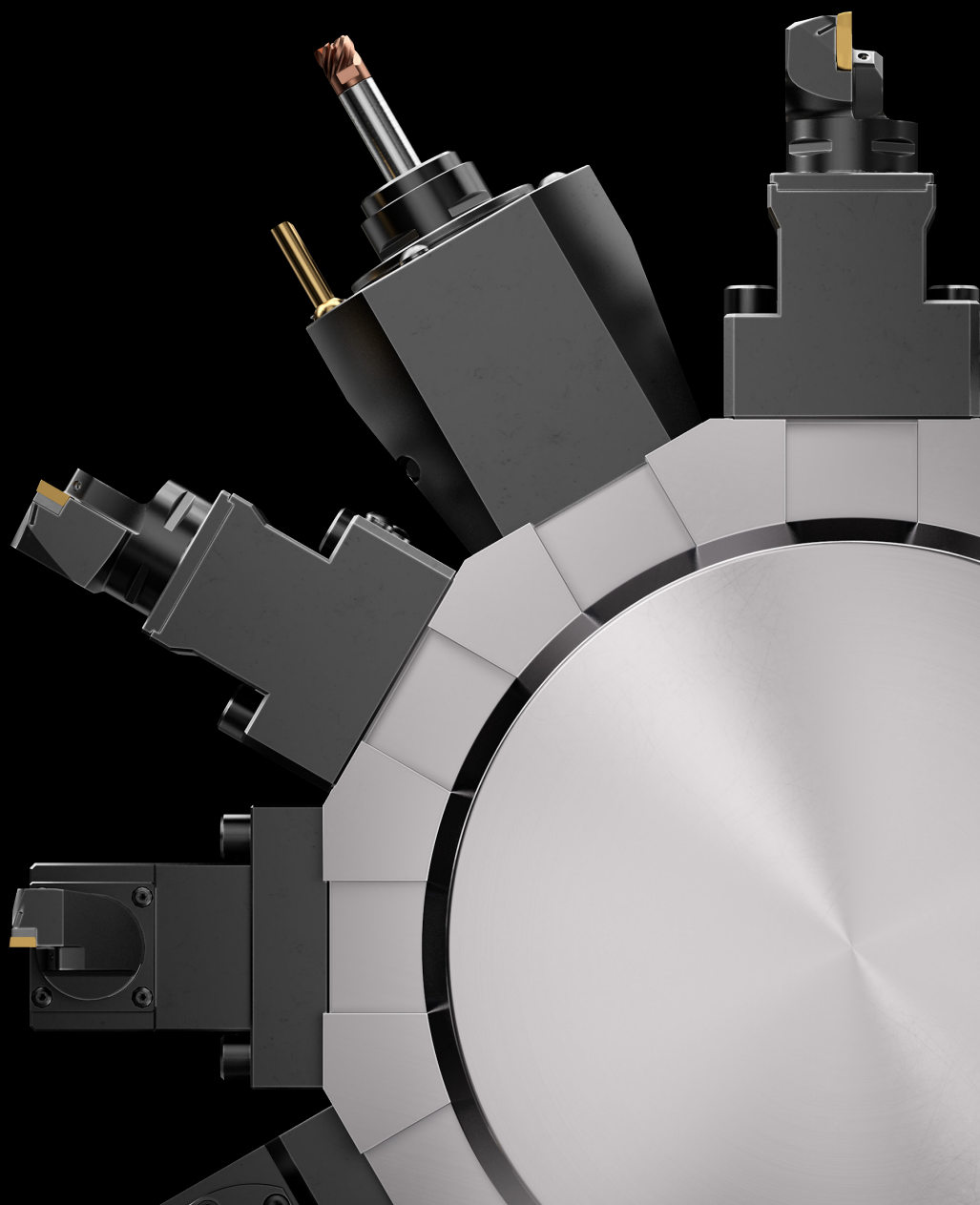


Quick change, quicker ROI

The Coromant Capto® quick change tool holding system is designed to rationalize your tool management process through the use of a single system for both turning and rotating tools.

Coromant Capto® provides high repeatability and maximum rigidity, enabling the highest possible metal removal rates to be achieved.

Tool changeover times are typically reduced from up to 10 minutes to just one minute. No modifications are needed – these are standard tools that can be put into the machine right from the start.



Read more about
Coromant Capto®



